

C-PUMA Master

Electrical motor & Endo motor
One machine multi-use ,Super easy to use!



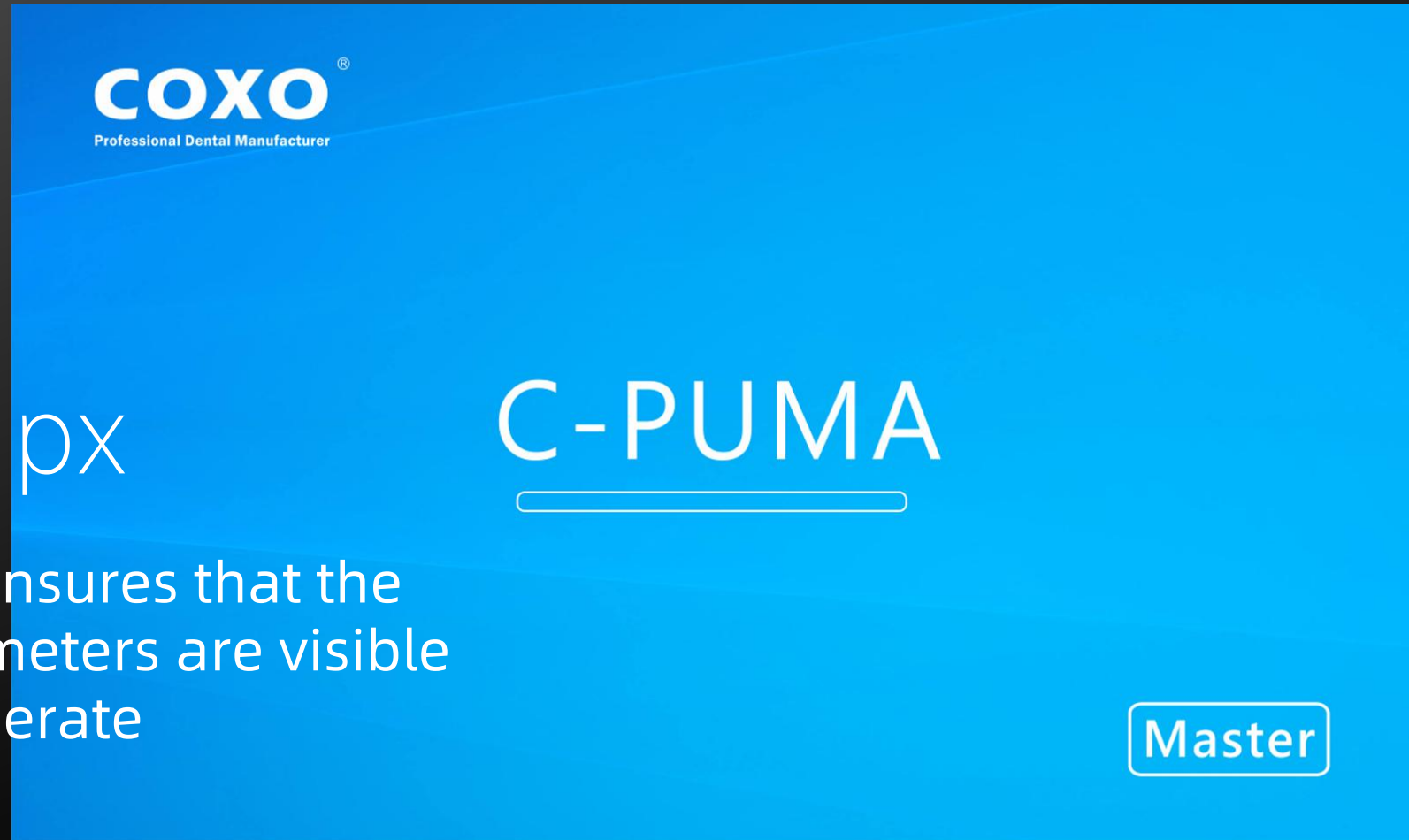
<https://www.alandental.com>

Streamlined Design
Beauty, but not only beauty



5 inch
800*480 px

Bigger screen, ensures that the
treatment parameters are visible
more easy to operate



All touch screen
The convenience you can't image



C-PUMA Master Electric motor

With 1:5
contra angle

Max rpm
200000



<https://www.alandental.com>

More options



Adapt with contra angle and straight head in
accordance with ISO3964

Motor Speed

Easy to deal with all kinds of basic situations



Super High Torque

Keep the constant cutting force

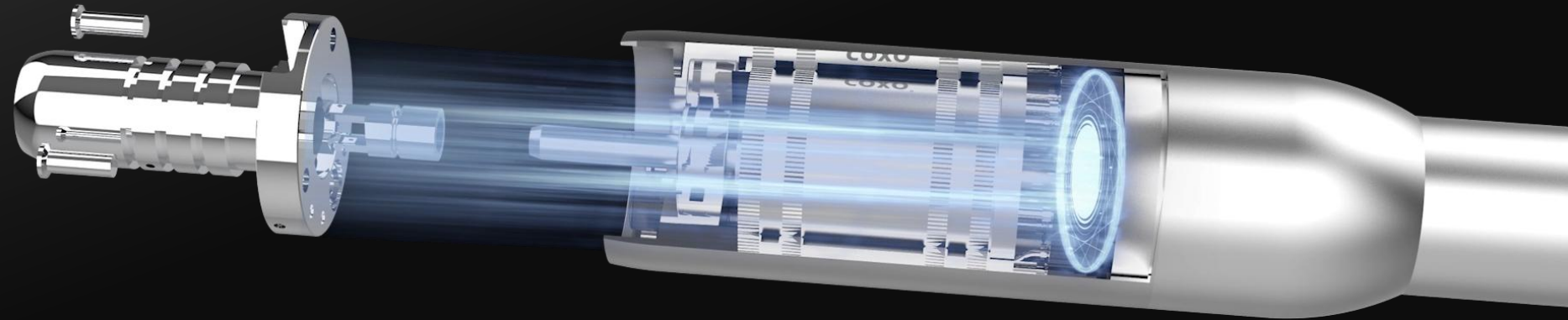


3.0N.cm

Handle with air cooling design

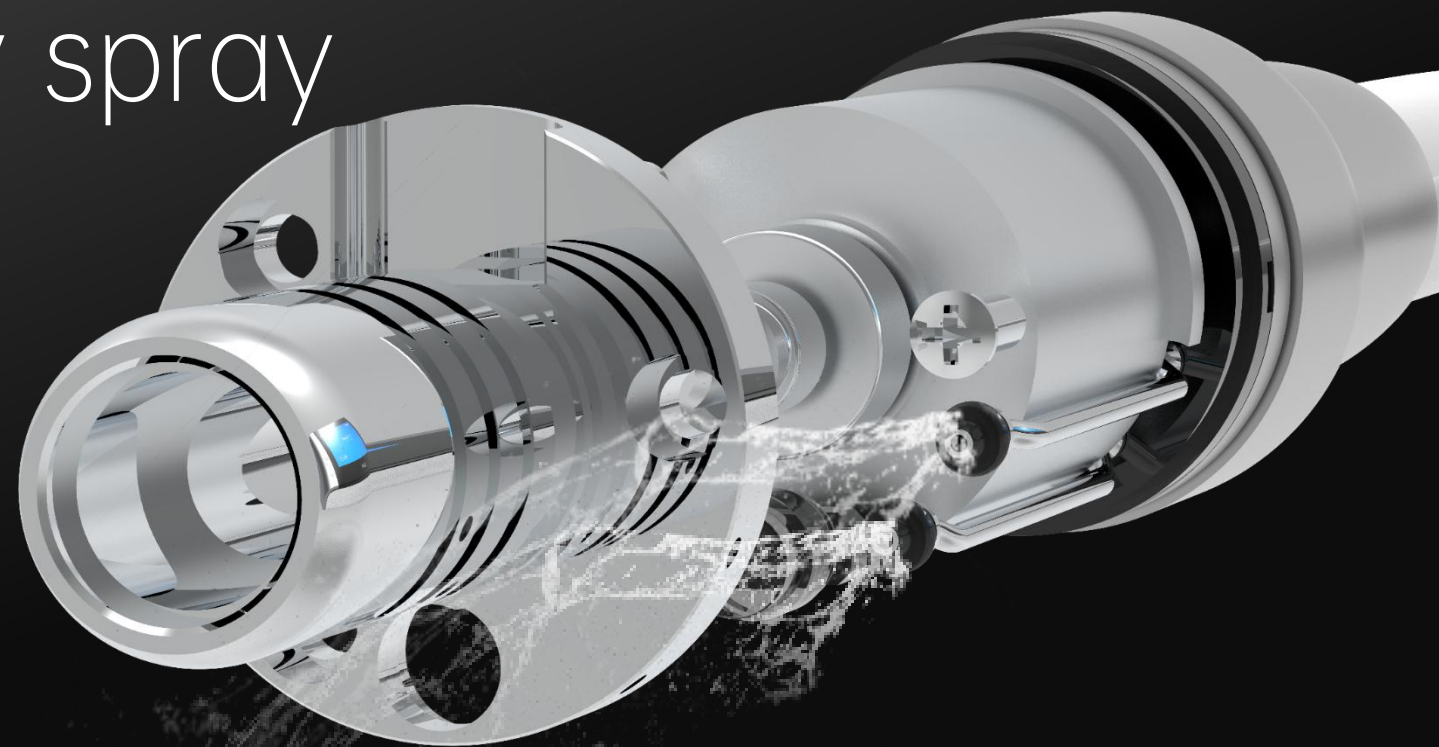
More
humanized
design

Keep
comfortable
temperature



Internal waterway spray

More convenient
More stable

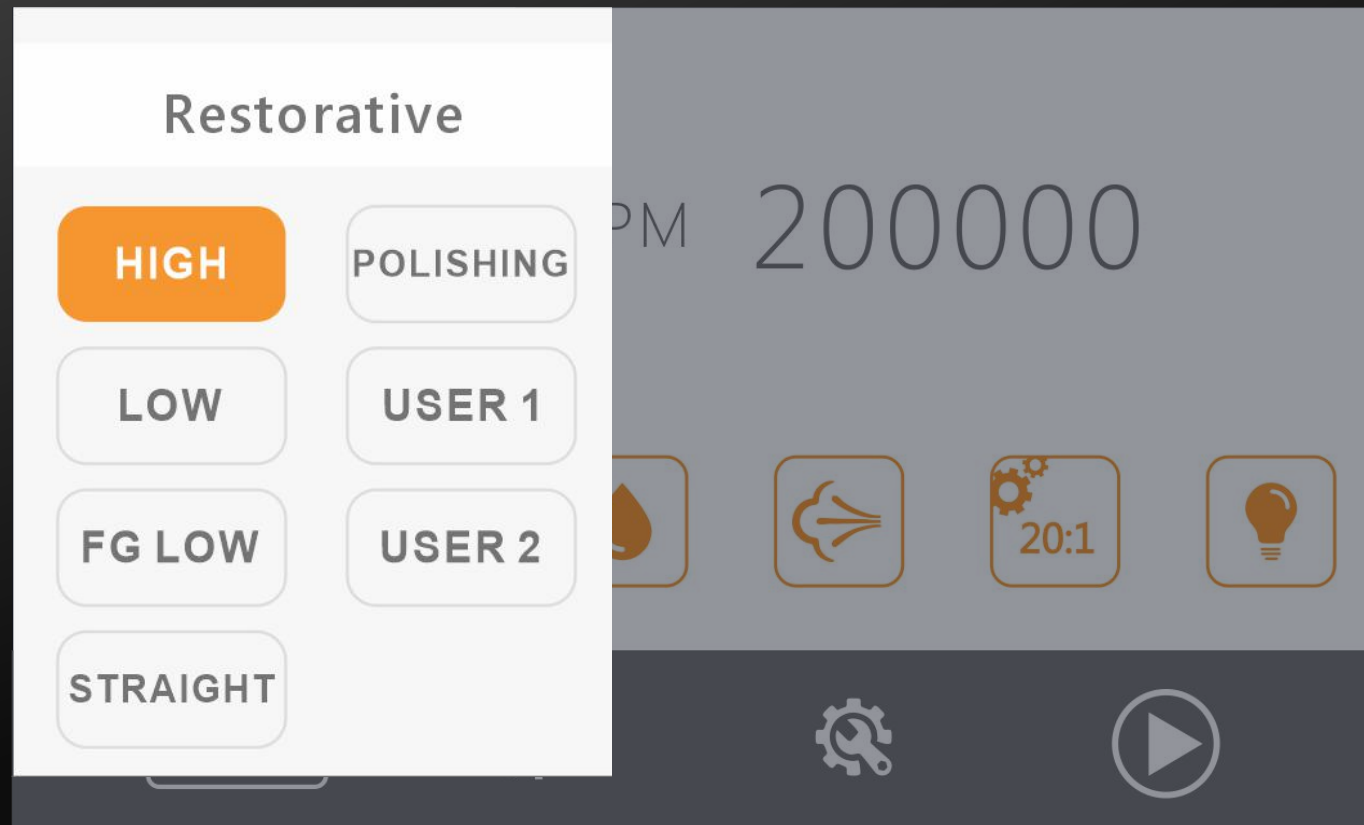


Powerful LED

- >25000lux, it can give you a clear vision
- Delay time is adjustable

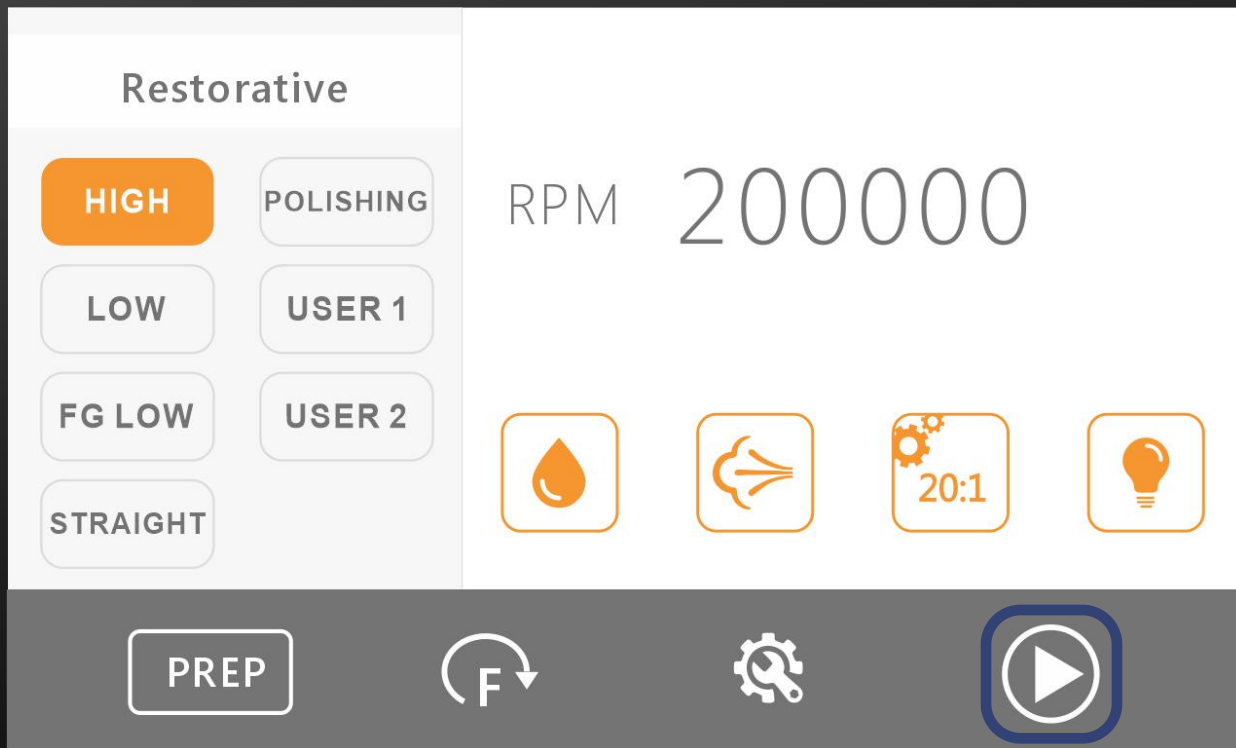


Build-in 7 memory programs



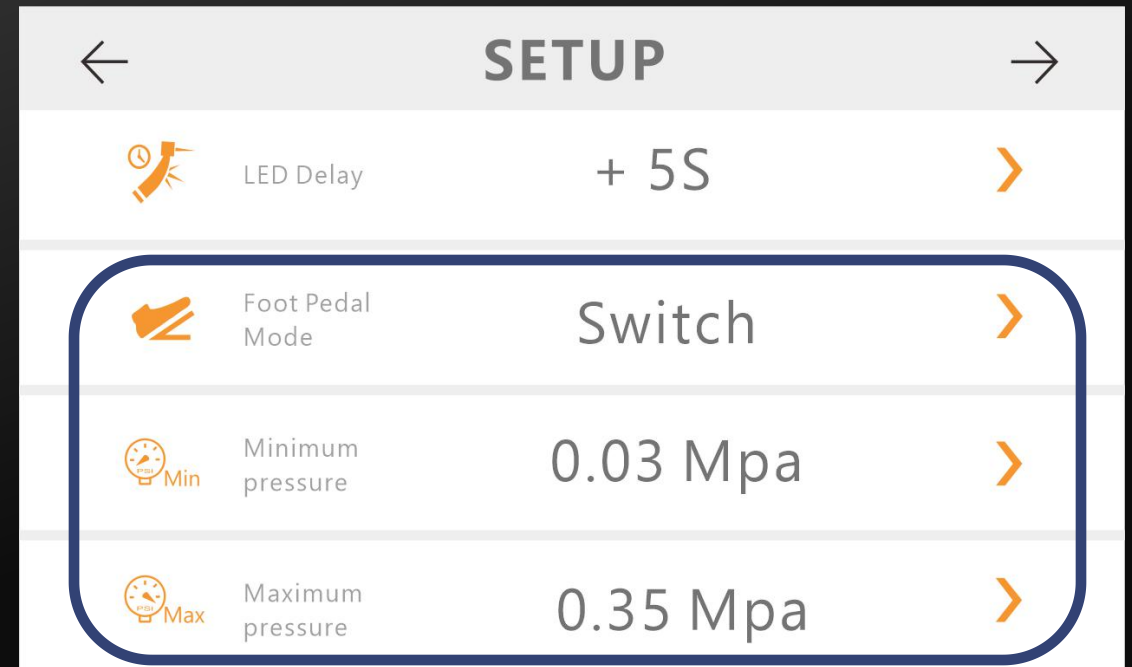
Manual Start

Touch & Hold to start or stop the motor
Prevent wrong operation



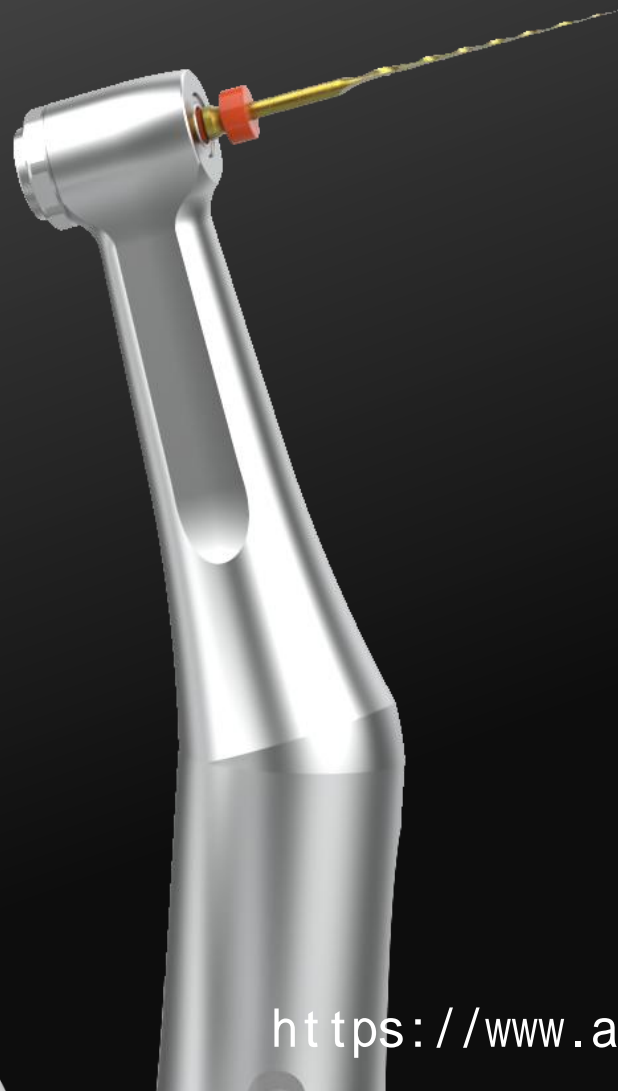
Pneumatic Start

- Can use foot pedal mode to star/stop the motor.
- Suitable for two foot pedal mode Switch/Linear
- Starting air pressure of the motor can be customized



C-PUMA Master

Endo motor



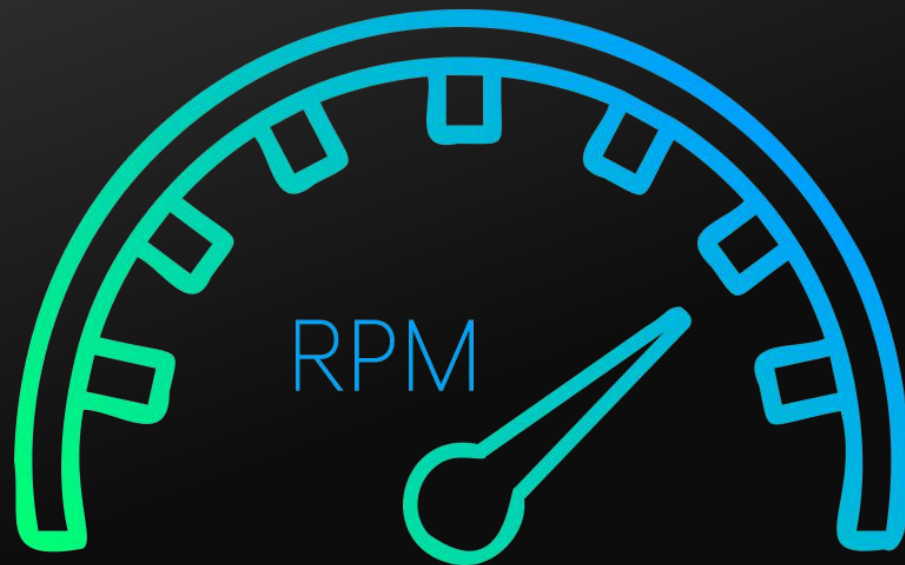
With 6:1 mini head
contra angle

Can be used for different
root canal shapes



Motor Speed

Easy to deal with all kinds of basic situations



250~
1200

Super High Torque

Keep constant torque output



0.6~
5.1N.cm

Built-in system

7 Mainstream brands

30+ file system

200+ file parameters



C-PUMA master Parameter

Power adaptor: Input AC100~240V Output DC29.5V
Main unit: Input power AC 24V
Motor speed: Maximum 40,000rpm
Motor torque: Maximum 3.0N.cm
Motor outer diameter: 20.6mm
LED brightness: >25,000lux

Electric motor model(With 1:5 contra angle)
Speed: 10,000~200,000rpm

Endo motor model(With 6:1 contra angle)
Speed: 250~1,200rpm
Torque: 0.6~5.1N.cm